

The view from the UK Automotive Sector

Mike Hawes, Chief Executive, SMMT

WorldDAB Automotive Summit

Wednesday 22 June 2022

Full Year 2021 production

FULL YEAR 2021

NEW CAR MANUFACTURING

TOTAL: 859,575

-6.7%

YEAR-ON-YEAR CHANGE



HOME



153,749

YEAR-ON-YEAR CHANGE



-10.6%

EXPORT



705,826



-5.8%

EXPORT SHARE



FULL YEAR 2021

NEW CVs MANUFACTURING

TOTAL: 73,600

11.3%

YEAR-ON-YEAR CHANGE



HOME



35,921

YEAR-ON-YEAR CHANGE



27.3%

EXPORT



37,679

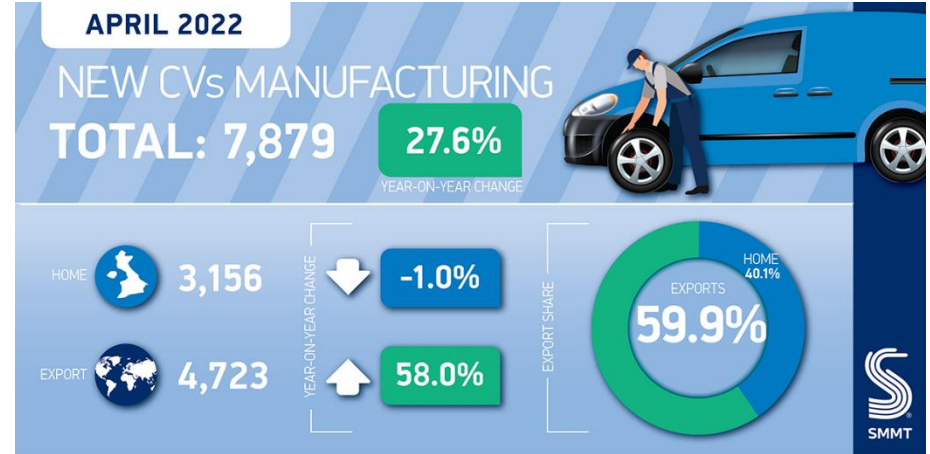
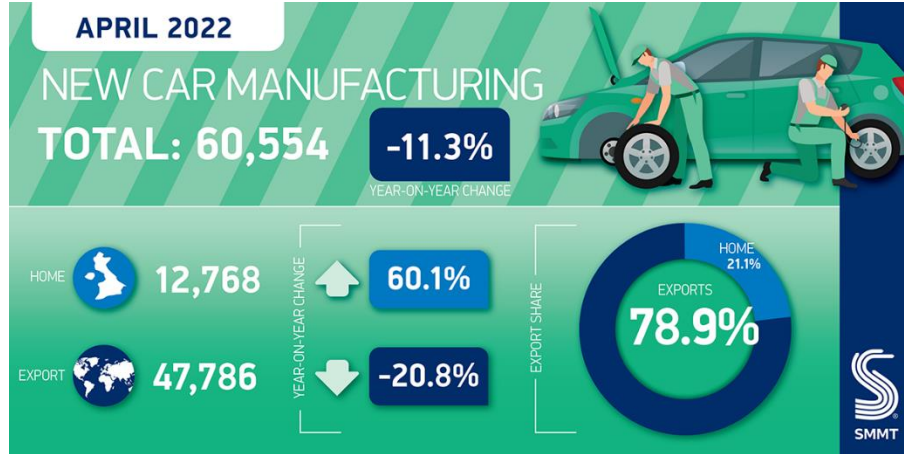


-0.6%

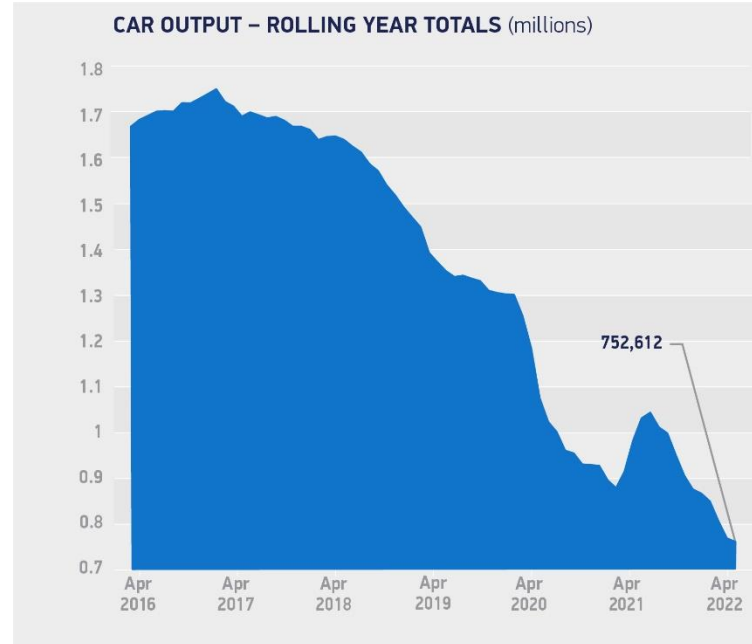
EXPORT SHARE



April 2022 production



Rolling year production



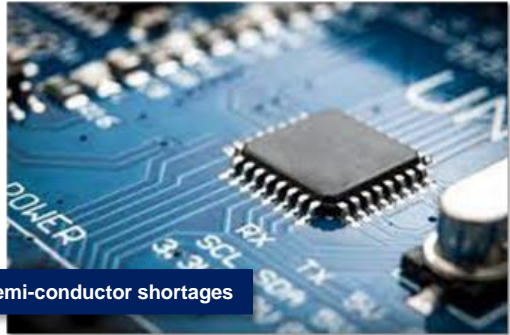
Supply chain challenges



Raw material shortages



Domestic / Global Logistics issues



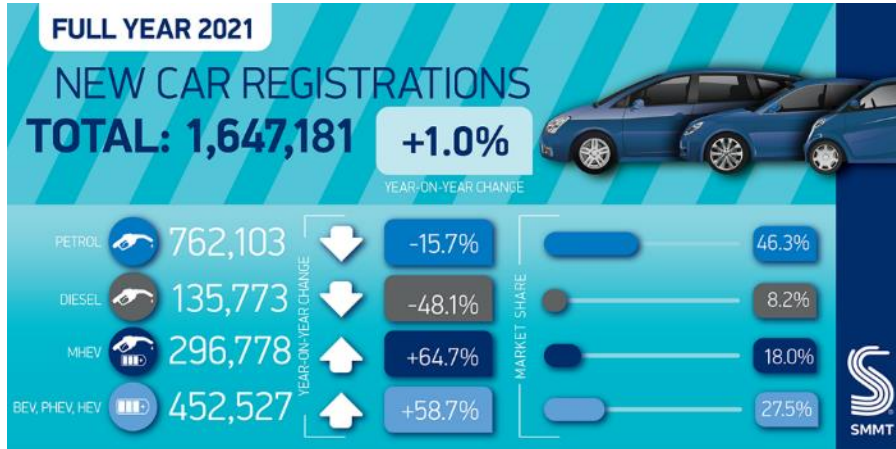
Semi-conductor shortages



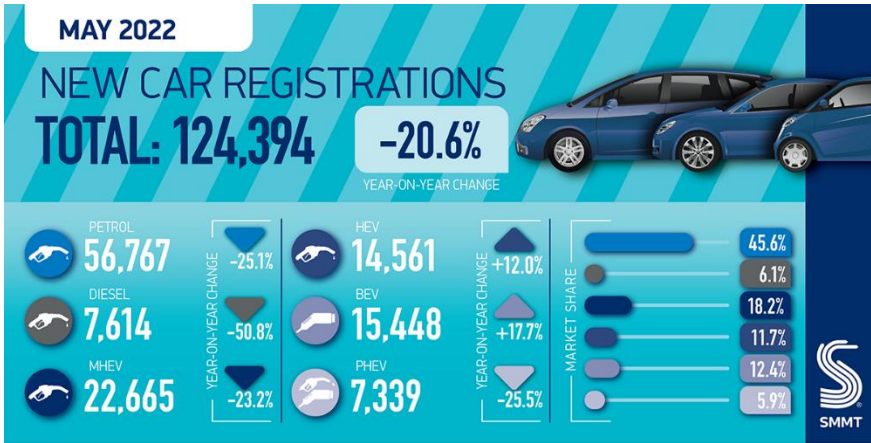
Covid-19 & Ukraine Crisis



Full Year 2021 registrations



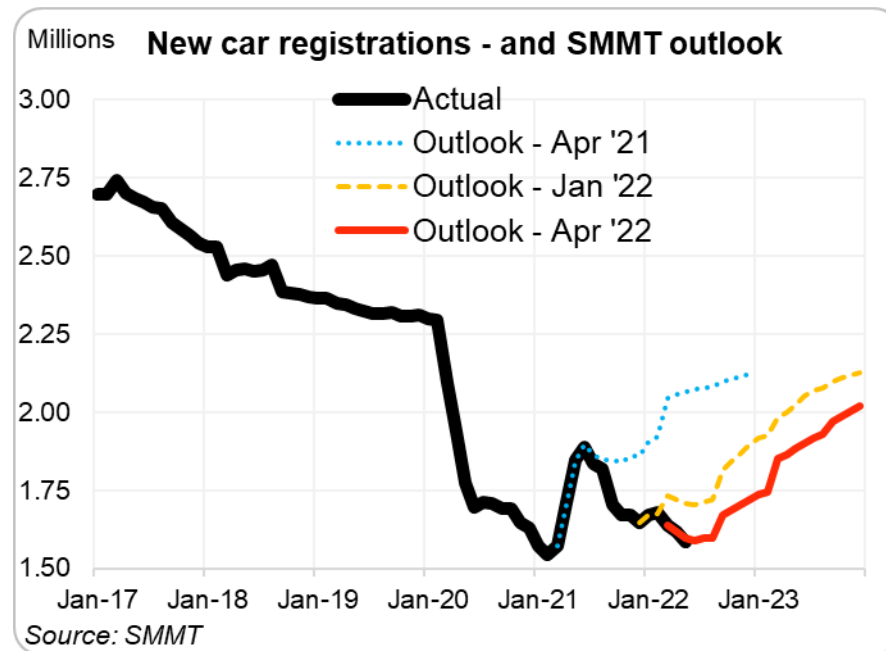
May 2022 registrations



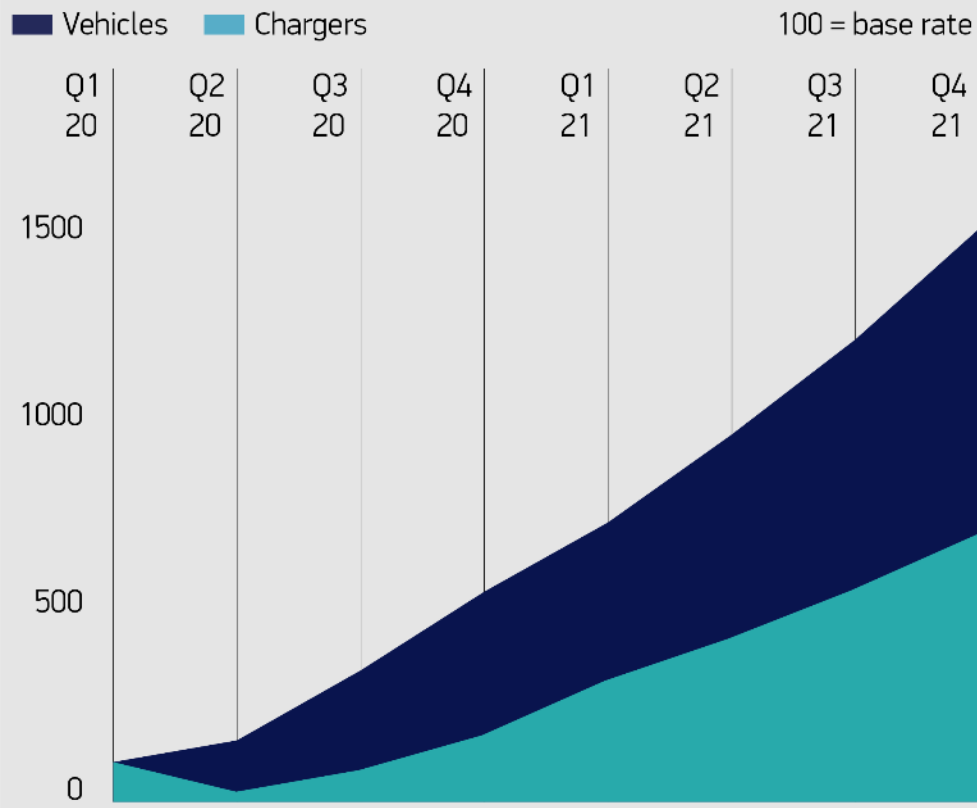
New car registrations

Supply constraints and weakening economic setting sees further outlook cut

- Outlook cut again in April -1.72mn now expected in 2022 (from Jan's 1.9mn). Equal 1.9mn loss vs '19 in '20-'22

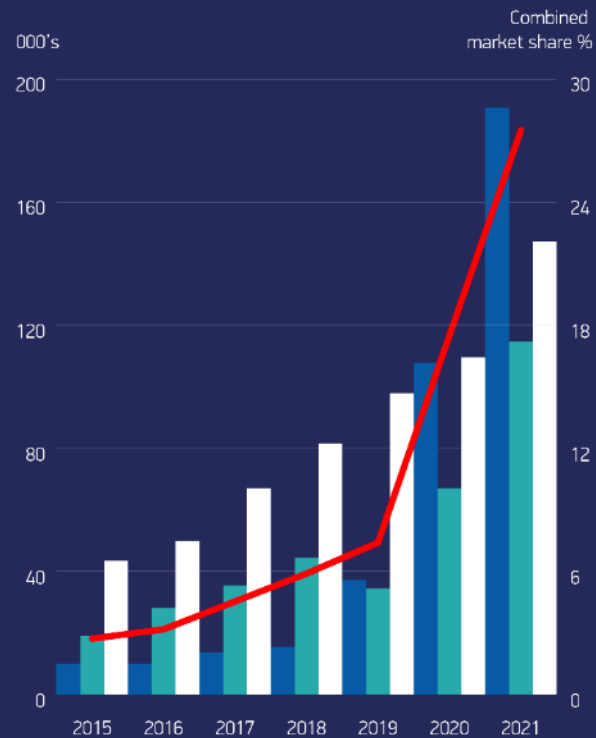


New plug-in car registration growth vs. EV chargepoint growth



NEW BATTERY ELECTRIC, PLUG-IN HYBRID AND HYBRID ELECTRIC VEHICLES REGISTRATIONS

Legend: BEVs (Blue), PHEVs (Teal), HEVs (White), Market share (Red line). Source: SMMT data.



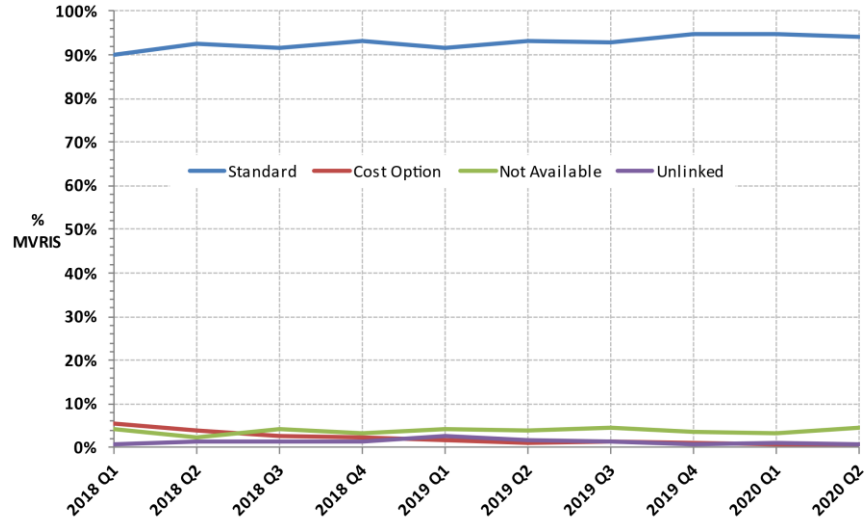
Digital Radio and UK Automotive

Mike Hawes, Chief Executive, SMMT

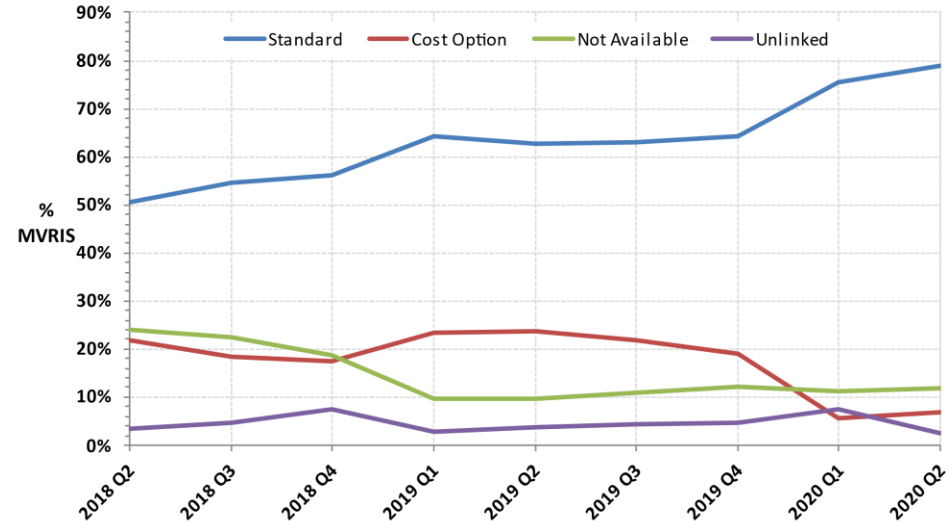
WorldDAB Summit

Wednesday 22 June 2022

Digital Radio in the vehicle parc



Passenger cars



LCV

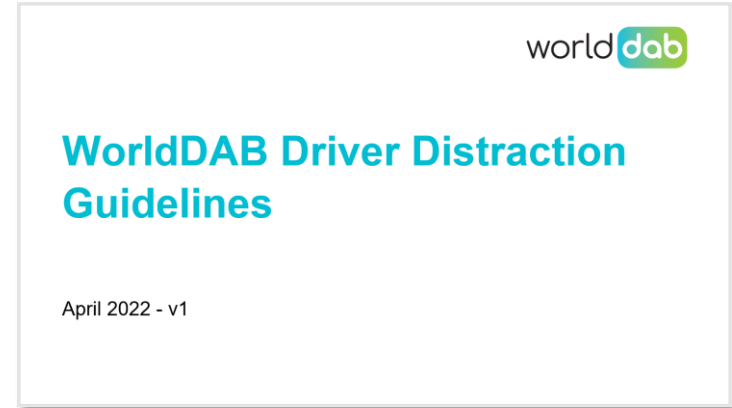
Connectivity and self-drive fuel in-vehicle choice

- Connectivity is growing in the vehicle parc
- Choice is enriched as a result
- In how radio can be delivered...
- ...as well as other services



Driver distraction

- Safety is number one priority for vehicle manufacturers
- We welcome the work of the UX group at WorldDAB
- No issues so far from members on the guidance
- Ongoing collaboration is key to ensuring best experience for radio in vehicle



What tech can help?

- Advanced distraction systems including those with cabin-facing cameras for driver and occupants
- Voice control
- Steering-wheel mounted controls
- Bluetooth and other connectivity
- Display design/heads-up display



Bosch interior monitoring systems



Mercedes-Benz HyperScreen

General safety regulation

- Will mandate ADDW from 2024 for new types
- And all registrations from 2026
- Would need to be incorporated into GB Type Approval regulations which is subject to a short consultation



Bosch interior monitoring systems

Highway Code changes for 2022

- Users of level 3 vehicles can watch an embedded screen when the vehicle is driving itself
- Useful to have guidance, but questions still unanswered
- Full legal framework is promised from government by 2025



Thank you

The Society of Motor Manufacturers and Traders Limited
71 Great Peter Street, London SW1P 2BN
www.smmt.co.uk

SMMT, the 'S' symbol and the 'Driving the motor industry' brandline are registered trademarks of SMMT Ltd.

